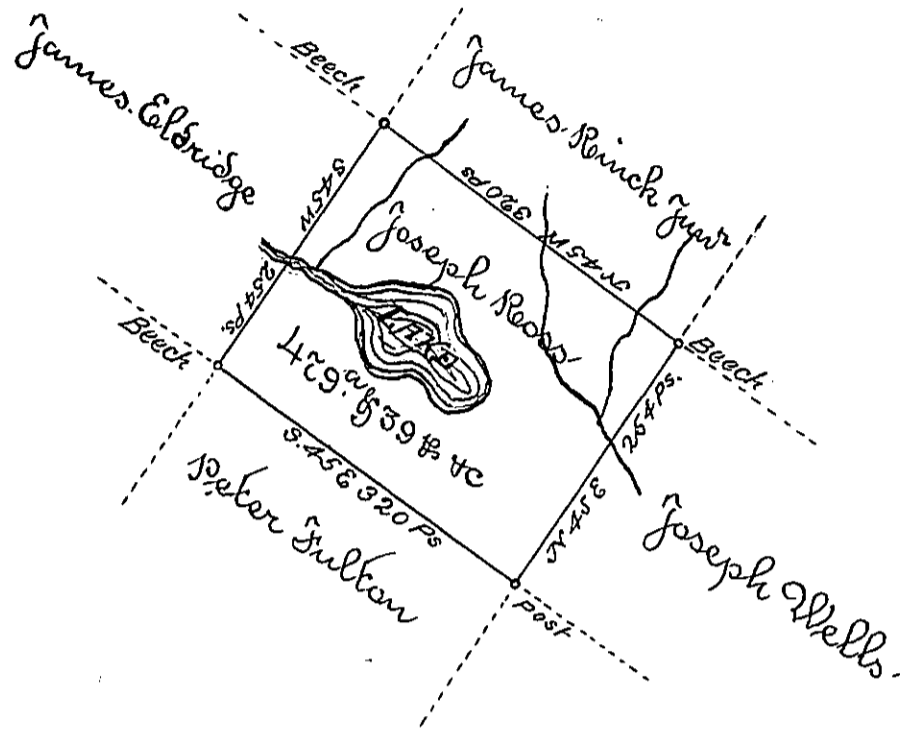


D-27-10-4



A Draught of a Tract of Land called *Salt Lick* situate on the waters of Salt Lick and Tunkhannock Creeks in the County of Luzerne, adjoining Land of James Reinch and others, surveyed the 5th day of November 1788 for Joseph Ross in pursuance of his warrant bearing Date the 9th Day of October 1788. Containing four Hundred and Seventy nine acres, thirty nine perches and the Allowance of six Per Cent for Roads &c.

To John Lukens Esq }
 Surveyor General }

by Wm Gray D.S.

IN TESTIMONY that the above is a copy of the original remaining on file in the Department of Internal Affairs of Pennsylvania, made conformably to an Act of Assembly approved the 16th day of February, 1833. I have hereunto set my Hand and caused the Seal of said Department to be affixed at Harrisburg, this fifth day of November 1895.

James W. Latta
 Secretary of Internal Affairs.